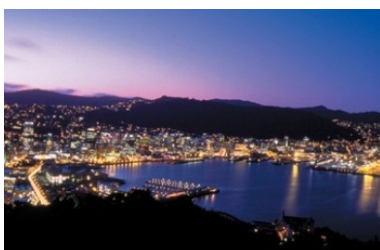


## City Lights to Alpine Heights Tour

Journey south from Auckland's vibrant cityscape to the breathtaking mountains and adventure-filled charm of Queenstown. Along the way, explore New Zealand's cultural heartlands, including the geothermal wonders of Rotorua and the eclectic vibe of Wellington. Cross to the South Island for incredible wildlife encounters in Kaikōura, time to explore the vibrant city of Christchurch, and stunning alpine scenery. Finish your tour with an unforgetting bucket list stay at Waitai Lodge and helicopter flight into Milford Sound.

Starts in: Auckland  
 Finishes in: Queenstown  
 Length: 16days / 15nights  
 Accommodation: Hotel 4 star  
 Can be customised: Yes

This itinerary can be customised to suit you perfectly. We can add more days, remove days, change accommodations, mix it up, add activities to suit your interests or simply design and create something from scratch. Call us today to get your custom New Zealand itinerary underway.



**Inclusions:**

Includes: Late model rental cars

Includes: Unlimited kms

Included activity: The Visitor Promise - Cultural Learning Course

Included activity: Private Transfer Auckland Airport to your Auckland Accommodation with Tourcorp

Included activity: Ata Whenua - Shadowland Film at Fiordland Cinema

Included activity: Mountain Jade - Highlights Tour

Included activity: Entry to Te Papa The Museum of New Zealand

: 14 breakfasts, 2 lunches, 1 dinner

Includes: Fully inclusive rental car insurance (excess may apply)

Includes: Afterhours emergency support while touring

Included activity: Electronic Travel Guide and In-Country Support App

Included activity: Christchurch Triple Pass - Tram, Punting and Gondola

Included activity: Helicopter from Milford Sound into Martins Bay - Lunch and Dinner Included

Included activity: National Kiwi Hatchery Experience

Included activity: Interislander Ferry Wellington to Picton with Premium Plus Lounge

## Day 1



### Private Transfer Auckland Airport to your Auckland Accommodation with Tourcorp

You will be met at the Auckland airport by the driver and transferred to your Auckland accommodation.

### Welcome to Auckland

Welcome to Auckland, known in Māori as Tāmaki Makaurau. Auckland is New Zealand's vibrant "City of Sails," and the country's largest metropolitan area. Nestled between the Pacific Ocean and the Tasman Sea. Surrounded by native bush, lush rainforests, and pristine beaches, Auckland is a haven for both adventurers and urban explorers. Wander through world-class museums and galleries in the city centre or enjoy a peaceful retreat at the Auckland Gardens, where stunning landscapes showcase New Zealand's diverse flora. Stroll along the lively waterfront to savour fresh seafood and international cuisine at Viaduct restaurants. For an unforgettable perspective, ascend the iconic SkyTower, New Zealand's tallest structure, and take in panoramic views of the city and its picturesque islands.

### SUGGESTED ACTIVITY - All Blacks Experience

See what it takes to make, shape and be an All Black. Experience first-hand the excitement and emotion of game day. Discover the stories behind some of world rugby's most famous players, moments, and matches.

This guided experience introduces you to the game of rugby including state-of-the-art displays combining sound, images, interactive technology, and hands-on activities. Discover New Zealand's deep passion for our national sport, experience the full force of the All Blacks haka, and tackle interactive zones where you can try out your kicking, catching, line-out, and accuracy skills against legendary All Blacks.

### Your accommodation: Sudima Auckland City

Conveniently located within easy walking distance of Auckland's bustling shopping, arts, dining and entertainment precincts and opposite the New Zealand International Convention Centre.



## Day 2



### Explore Auckland

Perched on the edge of a large natural harbour, New Zealand's "City of Sails" offers the best of both worlds. Sandy beaches, native bush and lush rainforests give way to a vibrant urban culture. Spend time in the Viaduct Harbour, try your hand at sailing an America's Cup Yacht or take the ferry to nearby Waiheke Island for a gourmet food and wine experience. Venture to the top of Auckland's highest volcano, Mt Eden, for soaring views of the Hauraki Gulf or hop on the short ferry to Rangitoto Island and hike to the top of the volcanic island. Immerse yourself in nature at the expansive Auckland Botanic Gardens, sprawled across 156 acres of native forest, pack a picnic, soak up the sunshine, and enjoy the birdsong. Head up to the Sky Tower, standing over 300m tall, and have a meal in the 360-degree revolving restaurant. Scale the outermost perimeter of the Harbour Bridge or test your stomach with a bungy jump, then end your day on Ponsonby Road sampling upmarket culinary delights.

### SUGGESTED ACTIVITY - Sunset Kayak to Rangitoto Island & BBQ Dinner with Auckland Sea Kayaks

This sunset tour to the beautiful Rangitoto was rated 'Best Guided Tour in New Zealand' by Wilderness Magazine in 2020, and you will see why. After your safety briefing, you will kayak across the sparkling waters of the Waitemata Harbour where you may encounter Little Blue Penguins and Cooks Petrels on the hunt for dinner. As you reach Rangitoto you will pull up to the wharf and embark on a one-hour trek to the summit, learning about the history of the region along the way from your skilled and passionate guides. As you reach the top you will be rewarded with spectacular 360-degree views. After you make your descent you will be greeted with a Kiwi-style BBQ dinner at the water's edge, before your return paddle back under the twinkling light of the stars and Auckland city skyline. It is important you read and understand any risks associated with this activity. More information can be found here

## SUGGESTED ACTIVITY - Essence of Waiheke Wine Tour with Ananda

Known as 'New Zealand's Island of Wine', Waiheke has become home to a dedicated group of award-winning wine producers. With a unique micro-climate and the winemakers' philosophy of 'small is beautiful', Waiheke has produced some of New Zealand's most prestigious wines. Visit three of Waiheke's top vineyards and sample a range of their wines. Along the way enjoy a commented scenic drive, learning about the Island's history, geography, people, and culture from your knowledgeable local guide.

### Your accommodation: Sudima Auckland City

Conveniently located within easy walking distance of Auckland's bustling shopping, arts, dining and entertainment precincts and opposite the New Zealand International Convention Centre.

Meals included: Breakfast



## Day 3



### Collect Rental Car

This tour's from price includes an intermediate-sized vehicle, setting you up for comfortable travels. Yet, we understand every adventure is unique! Feel free to select the perfect wheels from our incredible collection of rental cars, spanning from economy hatchbacks to premium SUVs.

### Auckland to Rotorua

Your drive south from Auckland begins by crossing the Bombay Hills, which mark the boundary of the greater Auckland area, before leading you into the rich, sprawling farmland of the Waikato region. The drive takes approximately 2.5 hours non-stop, but we recommend allowing 3 hours for a relaxed journey. For a fantastic leg-stretching stop, you may consider a slight detour into Hamilton to visit the renowned Hamilton Gardens (known for its amazing themed garden collection). Alternatively, the quirky small town of Tirau, famous for its buildings shaped like a giant sheep and sheepdog, is right on your main route and makes a quick and fun photo stop. As you continue south, the scenery transitions, and telltale signs of steam and other geothermal activity will signal your arrival into the fascinating thermal and cultural hub of Rotorua.

## SUGGESTED ACTIVITY - Hobbiton Movie Set Tour from Shires Rest

In the heart of New Zealand, you can step into the lush pastures of the Shire with a guided tour of Hobbiton, as featured in The Lord of the Rings and The Hobbit Trilogies. Hobbiton is located just outside of Matamata in the heart of the lush Waikato farming region. Here you can visit such iconic Hobbit locations as Hobbit Holes, the Green Dragon Inn, the Mill and the Party Tree with a guide sharing behind-the-scenes tales and insight into the making of the films. Spend time wandering through Bagshot Row before being led inside a Hobbit Hole to view the detailed interior, designed to provide an authentic glimpse into the dwelling of a Hobbit.

### Rotorua

Discover the geothermal, adventure, and cultural wonderland of Rotorua. As you explore, you may see steam rising from cracks in the road, bubbling and hissing water in pools along the lake's edge, and the unmistakable smell of Sulfur. Rotorua is rich in Māori culture and history, with many Māori inhabitants recognising the great potential of the volcanic land. For an outdoor adventure, head to The Redwoods and experience the rainforest treetops from high up. There are a few accessible trails for disabled hikers and great biking trails as well. If you're lucky, you might spot some of New Zealand's native birds, such as the Pīwakawaka (Fantail) and the Tūī. Alternatively, enjoy the Lake Tikitapu Blue Lake Walk or explore Kuirau Park, where you'll find bubbling mud pools and steaming lakes. Don't miss the private thermal reserves such as Te Puia and Wai-O-Tapu, where you can walk among bubbling mud pools, spouting geysers, and Sulfur ponds. Just a few minutes from the town centre, the Agrodome and National Kiwi Hatchery offer an insight into nature. Rotorua's rich Māori culture is a must-see. Spend an evening with Te Pā Tū, complete with a traditional-style dinner or stroll along the lake edge to reach one of the country's oldest Māori villages at Ohinemutu. When hunger strikes, visit Eat Street in Rotorua CBD, a vibrant street lined with delicious eateries and restaurants to satisfy any craving. No visit to Rotorua would be complete without experiencing Rotorua's original tourist attraction - a relaxing spa treatment. This town boasts an array of wellness experiences to unwind in. Whether you are seeking adventure, culture, or relaxation, Rotorua offers an unforgettable experience.

### Mountain Jade - Highlights Tour

This 30-minute highlights tour is a rare opportunity to spend time with New Zealand Jade artists. New Zealand Jade known as Greenstone, but more commonly known in New Zealand as Pounamu has a rich history within Maori culture. The expert guide will show you the intricate process of Pounamu carving firsthand in the Mountain Jade studio. The local artist will be there to personally demonstrate the carving process and share their stories and knowledge with you. To top off the tour, you will get to select your very own piece of Pounamu and learn to string it yourself so you can take it home.

## Your accommodation: Sudima Lake Rotorua

Sudima Hotel Lake Rotorua boasts a location that is second-to-none, right on the shores of beautiful Lake Rotorua. Adjacent to the world-famous Polynesian Spa complex and just a short stroll to all the attractions in Rotorua.

Meals included: Breakfast



## Day 4



### National Kiwi Hatchery Experience

The National Kiwi Hatchery Experience is a special opportunity to gain insight into and view this highly regarded conservation centre. Developed with the visitor experience in mind, the hatchery boasts special viewing opportunities and is hosted by kiwi expert guides who ensure guests leave fully informed and all questions answered. Learn all about New Zealand's intriguing national icon and the efforts of the kiwi husbandry team, see and discover what it takes to hatch and rare chicks, and if you're lucky see baby chicks in person!

### SUGGESTED ACTIVITY - Restorative Journey Package with Wai Ariki Hot Springs and Spa

Indulge your senses in a Restorative Journey (Wai Whakaora), a thoughtfully designed therapeutic experience inspired by the practices and culture of Ngāti Whakaue. Embrace the healing power of the natural environment as your senses awaken through a series of hot and cold therapies. Your journey begins beneath a cascading waterfall, cleansing your body and mind. Transition to Te Ahi Tupua, where a sequence of hot and cold immersions invigorates and rejuvenates. Relax in the soothing waters of the Geothermal Pool, sourced from the renowned Rachel Spring. Follow this with a refreshing cold plunge, easing muscle tension and reducing inflammation. Conclude your experience in the Kohu Wai Arik steam room, where heated stones create a serene space for reflection and relaxation, leaving you revitalized and restored.

### SUGGESTED ACTIVITY - Te Pā Tū Evening Māori Cultural Experience - Dinner Included

New Zealand's Most Awarded Cultural Attraction, presenting Te Pā Tū. Feast on song, drama, tradition, and divine seasonal kai (cuisine) within the forest Pā (village) blanketed by towering Tawa trees, blazing bonfires, and a forest-formed amphitheatre. Te Pā Tū shares Māori history, traditions, and cultural aspirations across 4-hours of celebration and feasting. These events change with each season of the Maramataka, the Māori lunar calendar.

## Your accommodation: Sudima Lake Rotorua

Sudima Hotel Lake Rotorua boasts a location that is second-to-none, right on the shores of beautiful Lake Rotorua. Adjacent to the world-famous Polynesian Spa complex and just a short stroll to all the attractions in Rotorua.

Meals included: Breakfast



## Day 5



### Rotorua to Wellington

The drive from Rotorua to Wellington takes you via the township of Taupō home to New Zealand's largest lake. Following the lakeshore South you'll pass Turani and then ascend the central plateau onto the high country Rangipo Desert. Skirting the edge of Tongariro National Park, you'll reach the military town of Waiouru before descending through rich farmland and the rural towns of Taihape And Mangaweka. Follow the coast through Paraparamu, Paekakariki and Plimmerton to arrive at your destination, Wellington.

## SUGGESTED ACTIVITY - Wai-O-Tapu Thermal Wonderland

Wai-O-Tapu Thermal Wonderland is a spectacular showcase of New Zealand's colourful and unique geothermal elements sculpted by thousands of years of volcanic activity. You will be introduced to a diversely different natural landscape, extending over 18-sq. km. Enjoy viewing the volcanic features as you walk at your own pace along well-defined tracks. Relax in the first-class Visitor Centre, home to the Gift Shop and Cafacute; facilities. Visit the Mud Pool, the largest in New Zealand, it was originally the site of a large mud volcano which was destroyed through erosion in the 1920s. See the history and beauty of the Lady Knox Geyser at 10:15 am every day where a daily eruption happens of up to 20 metres.&nbsp;

---

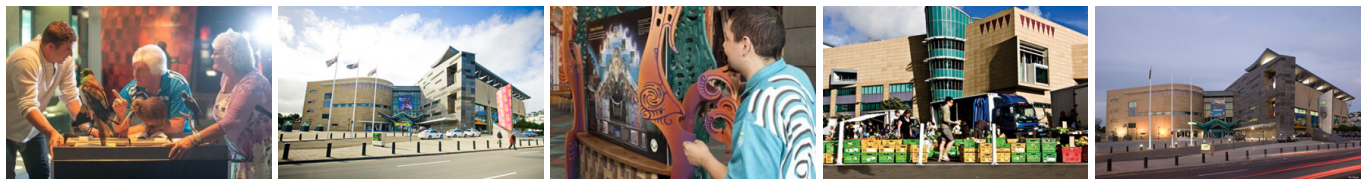
### Your accommodation: Naumi Hotel Wellington

Naumi Studio Wellington, an iconic heritage landmark in the heart of the Cuba Street precinct. After an extensive renovation, this 116-room property has transformed into visual feast for the senses, enthralling guests with eclectic spaces inspired from seafaring, the library world and enduring love.

Meals included: Breakfast



## Day 6



### Entry to Te Papa The Museum of New Zealand

Te Papa Tongarewa, meaning "Container of Treasures," is New Zealand's national museum, located on Wellington's stunning waterfront. Renowned for its bold and innovative approach, Te Papa seamlessly blends science, art, history, and Māori culture into interactive and thought-provoking exhibitions. Visitors can explore everything from colossal squid and geological wonders to contemporary art and powerful stories of Aotearoa's people. A visit to Te Papa is more than a museum experience, it's an inspiring journey through the heart of New Zealand's identity.

---

## SUGGESTED ACTIVITY - Lord of the Rings Half Day Tour with Wellington Rings Tours

This tour takes you to key locations involved in the film-making process around Wellington City. It's almost like a "highlights" tour of The Lord of the Rings! Pass by the iconic Embassy Theatre, where world premieres were held, and ascend Mt Victoria for stunning views of the city and harbor. Visit the memorable Outer Shire, where the Hobbits found a "Shortcut to Mushrooms" and "Got off the road" to hide from the Black Riders. Conclude your journey in "Wellywood," the heart of Wellington's film industry, with a behind-the-scenes tour of the renowned Weta Workshop.

---

## SUGGESTED ACTIVITY - Zealandia By Night Wildlife Sanctuary Tour

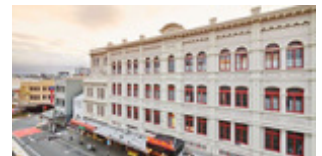
Taking a night tour of Zealandia wildlife eco-sanctuary is an unforgettable experience and one that comes highly recommended. A conservation success and safe haven for some of New Zealand's rarest native animals, Zealandia is home to many remarkable species of birds, reptiles and insects living wild within a beautiful 225 hectare (one square mile) valley, just 10 minutes from the central city.

---

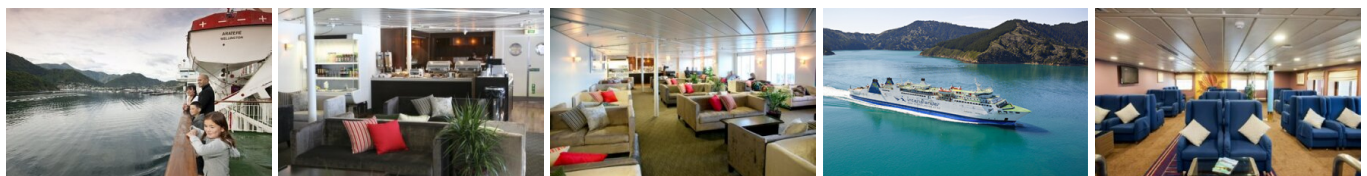
### Your accommodation: Naumi Hotel Wellington

Naumi Studio Wellington, an iconic heritage landmark in the heart of the Cuba Street precinct. After an extensive renovation, this 116-room property has transformed into visual feast for the senses, enthralling guests with eclectic spaces inspired from seafaring, the library world and enduring love.

Meals included: Breakfast



## Day 7



### Return Rental Car to Wellington Ferry Terminal

Return your rental vehicle at the Wellington Ferry Terminal rental car depot and continue on the journey.

---

## Interislander Ferry Wellington to Picton with Premium Plus Lounge

The 92 km ferry journey between Wellington and Picton, taking around 3 hours, is hailed as one of the world's most beautiful ferry rides. Departing Wellington Harbour, you'll pass landmarks like Pencarrow Head with New Zealand's oldest lighthouse, Red Rocks seal colony, and Oterangi Bay, famous for its record wind speed. From the Cook Strait, marvel at views of the Kaikōura Ranges and spot dolphins and seabirds. An hour of the trip winds through the stunning Marlborough Sounds, featuring bush-clad mountains, tranquil bays, and crystal-clear waters—a photographer's dream. The journey concludes in the charming town of Picton at the end of Queen Charlotte Sound. When not soaking up the views from the deck, relax in the Premium Plus lounge, offering complimentary drinks, snacks, internet, and luxurious seating for the most comfortable way to cross the Cook Strait.

---

## Collect Rental Car

This tour's from price includes an intermediate-sized vehicle, setting you up for comfortable travels. Yet, we understand every adventure is unique! Feel free to select the perfect wheels from our incredible collection of rental cars, spanning from economy hatchbacks to premium SUVs.

---

## Picton to Blenheim

It is a short 30 minute drive, as you'll follow the valley south to arrive in Blenheim, located in the heart of Marlborough - New Zealand's largest wine producing region. Go through acres of leafy green vines and marvel at the magnificent 'dry hills' of Marlborough in the distance.

---

## Blenheim

Surrounded by endless rows of vines, Blenheim lies at the heart of the Marlborough wine region. This charming, compact town is built around a traditional marketplace, offering a welcoming atmosphere and a taste of local life. With a fantastic selection of cafes, restaurants, and shops, it's the perfect place to unwind for an afternoon. The town is also home to the Omaka Aviation Heritage Centre, which houses Peter Jackson's Great War collection, complete with mannequins by Weta Workshop. Of course, no visit to the region would be complete without sampling its world-class wines at the many renowned wineries.

---

## Your accommodation: Carnmore Chateau Marlborough

Carnmore Chateau Marlborough offers luxury accommodation in the heart of Blenheim, one of New Zealand's most famous wine regions. This boutique hotel prides itself on offering guests luxury accommodation with enviable attention to detail, overlooking Seymour Square Gardens and is just a short walk from Blenheim's town centre.

Meals included: Breakfast



---

## Day 8



---

## Blenheim to Kaikōura

Cross Marlborough and head towards one of the most spectacular coastlines of the South Island, the Kaikōura Coast. The road hugs the shore for around 50 kms and offers many chances to view native wildlife. To the east is the South Pacific Ocean and to the west the towering Kaikōura Ranges. Kaikōura Township is a bustling little place with many cafes, restaurants and shops, but the main reason for visiting here is the wildlife and it's one of the only places in New Zealand you can see whales year round.

---

## Kaikōura

Kaikōura is a stunning coastal town known for its rich marine life and dramatic scenery. Visit the fur seal colony, take a whale-watching cruise, or swim with playful dusky dolphins. The town is rich with attractions, walking tracks, and activities for every visitor. A walk around the Kaikōura Peninsula is a must, where you can explore tide pools teeming with marine life, observe sea creatures basking on the rocks, and, for bird lovers, spot the impressive native albatross. Just be sure to keep a respectful distance from any sea lions you meet. Highlights like Ohau Point and historic Fyffe House offer insight into the region's wildlife and whaling past. Finish your visit by sampling the fresh local seafood, renowned for having some of the best fish and chips in the country, or by taking a relaxing wander through the tranquil Lavendyl Lavender Farm.

## SUGGESTED ACTIVITY - Zipline & Native Forest Tour with EcoZip Kaikoura

Enjoy a scenic journey to Kaikōura's beachfront airfield, followed by a 4WD adventure crossing the braided Kahutara River to Rakanui Station. Take in panoramic views of rolling farmland, lush valleys, and snowcapped mountains before embarking on an exhilarating 5-zipline course, including twin lines for side-by-side rides. Learn fascinating local history from expert guides and enjoy a walk through native forest, with a chance to plant a tree during winter as part of Eco Zip's conservation program. An unforgettable eco-adventure awaits! It is important you read and understand the risks associated with this activity before travel. For more information, please see [here](#)

### Your accommodation: Sudima Hotel Kaikōura

This state-of-the-art waterfront hotel in Kaikōura has a 4.5 star rating with an outstanding in-house restaurant, a bar and conference facilities.

Meals included: Breakfast



## Day 9



### SUGGESTED ACTIVITY - Ocean's Cabin with Whale Watch Kaikōura

Experience New Zealand's only marine-based whale-watching company. Whale Watch Kaikōura offers a once-in-a-lifetime, up-close encounter with the giant Sperm Whale. You are also likely to encounter New Zealand fur seals, dolphins, and albatross. Depending on the season you may also see Pilot, Blue, and Southern Right whales as well as migrating humpbacks. Often orcas can be spotted here and the world's smallest dolphin, the Hector's, occasionally makes an appearance.

### Kaikōura to Christchurch

Travel down the coast before heading inland through the North Canterbury wine region - the Waipara Valley. If you've time on your hands we recommend taking a detour to Hanmer Springs for relaxing dip in its thermal pools. Arriving into Christchurch you'll see a new and improved city, steadily rising from the ruins of the 2011 and 2010 earthquakes.

### Christchurch

Christchurch known in Māori as Ōtautahi, is the largest metro area in the South Island. Commonly referred to as New Zealand's "Garden City", Christchurch is home to one of the biggest public parks in the country, and beautiful botanic gardens. The city was hit with devastating earthquakes in 2010 and 2011, now the city crosses the line between its English heritage and a new modern architecture. To take in some arts and culture, pay a visit to the Canterbury Museum or the Christchurch Art Gallery. Take a step back in time with a tram around the city or punt along the Avon River. If tasting your way around the city is your means of travel, try out a cultural eating tour. A short drive from the CBD will lead you to the outskirts of the Banks Peninsula beachside suburb of Sumner or through the tunnel to Lyttleton Harbour which hosts fantastic markets on Saturday mornings.

### Your accommodation: Sudima Christchurch City

Sudima Christchurch City is a brand new 5-star boutique hotel, ideally located on Victoria Street. Amidst an array of cafes, restaurants and bars, stay only a martini olive pips' throw from beautiful Hagley Park and Christchurch's CBD. Experience the garden city in comfort and style.

Meals included: Breakfast



## Day 10



## Christchurch Triple Pass - Tram, Punting and Gondola

Experience three of Christchurch's iconic attractions in one day: the Christchurch Tram, Christchurch Gondola, and Punting on the Avon River. The historic tram is a delightful way to explore the evolving inner city, taking in the various sights with the hop-on hop-off pass and learning about the city from the live commentary. You'll also enjoy a bird's eye view of Christchurch and the Canterbury region including the distant peaks of the Southern Alps when you ride the gondola cableway to the top of the Port Hills in Heathcote Valley. Punting on the Avon River takes you through the city's green belt: a relaxing way to explore what is affectionately known as the 'Garden City'.

---

## SUGGESTED ACTIVITY - Ōtautahi City Meander with Amiki Cultural Food Tours

Discover the cultural richness of Ōtautahi Christchurch on this 75-minute guided walk. Begin with a traditional Māori welcome and hear ancestral tales of creation and connection. Stroll along laneways and the river, learning how Māori heritage is reflected in the city's rebuild. From mahinga kai traditions and stories of settlers to modern art and architecture, this tour celebrates Christchurch's diverse history and vibrant future, offering a unique way to explore the city's past and present.

---

## Your accommodation: Sudima Christchurch City

Sudima Christchurch City is a brand new 5-star boutique hotel, ideally located on Victoria Street. Amidst an array of cafes, restaurants and bars, stay only a martini olive pips' throw from beautiful Hagley Park and Christchurch's CBD. Experience the garden city in comfort and style.

Meals included: Breakfast



---

## Day 11



## Christchurch to Aoraki-Mt Cook National Park

Drive through the heart of the South Island, crossing the vast Canterbury plains. Catch your breath in Geraldine before continuing through Fairlie. Ascending Burkes pass you'll come to the picturesque town of Lake Tekapo. Follow the road and take in the view of Aoraki-Mt Cook (New Zealand's tallest mountain) from the shores of Lake Pukaki, known for its glacier fed turquoise blue colour. Continue along the lake to your final destination Aoraki-Mt Cook Village.

---

## Aoraki-Mt Cook National Park

At 3754m Aoraki-Mt Cook is Aotearoa-New Zealand's highest mountain, located deep in the heart of the Southern Alps. As well as its impressive beauty, Aoraki-Mt Cook National Park is also home to a huge range of awe-inspiring sights and activities. Take to the air with Mt Cook Ski Planes for a scenic flight that includes a glacier landing. At around 27 kilometres long the Tasman Glacier is New Zealand's longest and a Glacier Explorers tour allows you to see its unique features up close.

There are many short hikes in and around the park and these are well signposted around the village. Those with an interest in the night sky should take a Big Sky Stargazing tour with the Hermitage Hotel. The region is considered to have one of the clearest night skies in the world and is one of the few gold-rated dark sky reserves worldwide.

Visit the Sir Edmund Hillary Alpine Centre for insight into this region's mountain climbing history. You'll also learn of Sir Ed's incredible achievements and his dedication to helping others around the world.

---

## SUGGESTED ACTIVITY - Glacier Explorers

Experience 500-year-old icebergs up close on the Aoraki-Mt Cook terminal lake. The Glacier Explorers tour is the only one of its kind in New Zealand and one of only three in the world! Very few glaciers terminate into lakes and even fewer of them are accessible. See towering ice cliffs and floating icebergs from the safety of a specially designed boat. These boats provide a safe way to view unseen and inaccessible areas of New Zealand's largest glacier The Tasman.

---

## SUGGESTED ACTIVITY - Sir Edmund Hillary Alpine Centre Museum and Theatre Explorer Pass with Hermitage

A tribute to New Zealand's Sir Edmund Hillary, a humanitarian, ambassador, and one of the world's greatest explorers. The centre showcases the Aoraki Mount Cook region, the history of climbing, and early transport used throughout the region. This comprehensive museum details the life of Sir Edmund Hillary, the Hermitage, and provides access to the 126-seat custom-designed theatre. Check out the daily film schedule which includes 3D Movies, documentaries, and 360-degree digital dome features.

## Your accommodation: Hermitage Hotel, Aoraki Wing Premium

The Hermitage Hotel ringed by magnificent snow-capped peaks of the Southern Alps, is a world-renowned tourist destination and has been an icon of superior accommodation and dining since 1884.

Meals included: Breakfast



---

## Day 12



### Aoraki Mt Cook National Park to Te Anau

Twizel, just south of Aoraki-Mt Cook was the location of many Lord of the Rings movie scenes and a little further on is Omarama, the gliding capital of New Zealand. The Lindis Pass is one of New Zealand's highest roads with the summit reaching 971 metres. The tussock-covered hills offer a visual contrast as you pass from the Mackenzie Basin and into Central Otago. The first Central Otago settlement you reach is the quaint village of Tarras, which has several boutique stores and a lovely cafe. Cromwell sits at the head of the Kawarau Gorge and the historic old town is well worth the visit, the buildings are now home to quaint shops and cafes. The old town buildings were relocated from the valley that now sits deep under Lake Dunstan. Continue through the sheer cliffs of the Kawarau Gorge as they guide you towards Gibbston, one of New Zealand's premier wine-growing regions. At the famous historic Kawarau Bridge, you can take a bungy jump or sit back and enjoy the drama as visitors hurtle off the bridge. Approaching Queenstown the impressive Remarkables mountain range comes into view and then beautiful Lake Wakatipu as you head south. The lake guides you into Southland through its rich farming pastures and into Te Anau, the gateway to Fiordland National Park.

---

### Te Anau

It is the gateway to Fiordland National Park and a perfect base to visit Piopiotahi-Milford Sound. The Milford Road originates here, and this is arguably one of the most scenic stretches of highway in the country. Te Anau sits on the shores of spectacular Lake Te Anau, which reaches depths of 417 meters. Te Anau Township is the starting point for many walking tracks, including two of New Zealand's Great Walks, the Milford track and the Kepler track. Apart from hiking, you could go kayaking, lake cruising, fishing, or exploring Te Anau Glowworm Caves. You could go for a bike ride alongside the lake towards Lake Manapouri, on a popular Lake to Lake biking route. Along the way, you will pass a bird sanctuary specialising in Takahe, and other native birds.

---

### Ata Whenua - Shadowland Film at Fiordland Cinema

Ata Whenua refers to the southwestern coast of New Zealand and translates to English as "Shadow Land". This breathtaking short film will take you on an unforgettable journey through one of the most awe-inspiring landscapes on earth, Fiordland National Park. Shot by award-winning cinematographers with outstanding musical composition, this is the next best thing to a scenic flight over this spectacular wilderness.

---

### SUGGESTED ACTIVITY - Pure Wilderness Jet Boat with Fiordland Jet

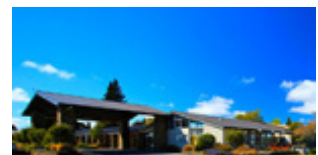
Jet boat down the Waiau river, across Lake Manapouri, to the ancient forest of the Fiordland National Park. Enjoy the thrill of jet boating down the majestic trout-filled Waiau River, to the serene Lake Manapouri. Step foot into the Fiordland National Park and go for a short walk while learning about the ancient beech forest and ferns. Your jet boat ride includes a number of stops at the exact locations of the filming the "Fellowship of the Ring" on the Waiau or "Anduin River". The driver will tell you the inside story of the filming the Lord of the Rings on this river. The trip will also include some thrilling 360 degree turns and spins as well as interesting interpretation about the flora and fauna and the local European and Māori history.

---

### Your accommodation: Distinction Te Anau Hotel & Villas

The Te Anau Hotel and Villas offers a range of accommodation from hotel rooms and suites to villas. Ideally located on the lake front this hotel is just a few minutes stroll from the shops, cafes and many activities Te Anau has to offer.

Meals included: Breakfast



## Day 13



### Helicopter from Milford Sound into Martins Bay - Lunch and Dinner Included

Your guide will transfer you to Milford Sound. Enjoy a spectacular scenic helicopter flight from Milford Sound to Martins Bay, followed by an impressive lunch set amongst the wilderness in our private location. The afternoon is yours to enjoy. Explore the Martins Bay sand dunes by foot, taking in the rugged beauty of this isolated West Coast beach. Alternatively, choose to relax at Waitai Lodge in front of the fire with a good book and enjoy a soak in the outdoor hot tubs. The group reunites for a delicious three-course dinner accompanied by a fine selection of New Zealand beer and wine. Sit back, relax, and reflect on a great first day.

### Your accommodation: Waitai Lodge Fiordland Escape

Waitai Lodge stands on the shores of a glistening lake, where mighty fiords descend into pristine waterways and majestic mountains rise above the lush rainforest. Despite the remote location, the Lodge and its home comforts await you.

Meals included: Lunch, Dinner



## Day 14



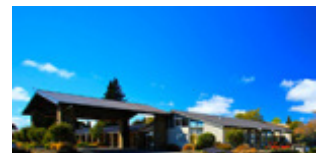
### Waitai Lodge to Milford Sound and return to Te Anau - Breakfast & Lunch Included

Awake to the sound of bird song. Enjoy a hearty breakfast before joining your guide on a scenic jetboat ride across Lake McKerrow. Take in the ever-adapting ecosystem as it shifts from a mountainous beech forest to a wetland and a vibrant coastal scenery. Marvel at ancient temperate rainforest with thousand-year-old giants such as native Rimu and Kahikatea. Alternatively, relax in the lodge while you appreciate your remote location. Regroup at the lodge in time for morning tea, before boarding your helicopter flight back to the dramatic Milford Sound. Marvel at Milford Sound's vertical granite walls rising from the sea while aboard the Fiordland Jewel for your luxury cruise. Your guide will then return you to Te Anau or Queenstown while you take in the impressive scenery.

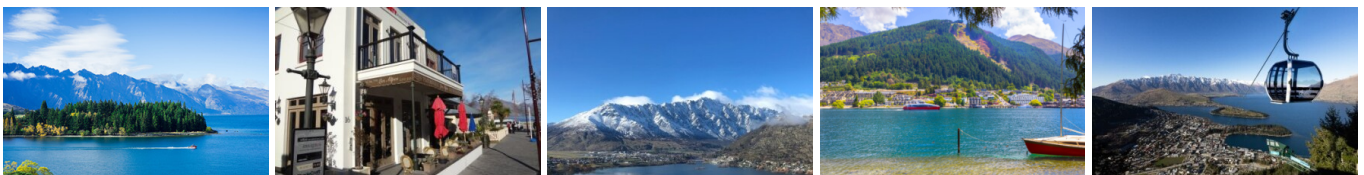
### Your accommodation: Distinction Te Anau Hotel & Villas

The Te Anau Hotel and Villas offers a range of accommodation from hotel rooms and suites to villas. Ideally located on the lake front this hotel is just a few minutes stroll from the shops, cafes and many activities Te Anau has to offer.

Meals included: Breakfast, Lunch



## Day 15



### Te Anau to Queenstown

Journey across expansive tussock lands en route to Queenstown. Pass through Mossburn, renowned as the deer capital of New Zealand, and continue through the picturesque Southland countryside. As the road begins to trace the edge of Lake Wakatipu, marvel at the breathtaking views from the Devil's Staircase. Finally, approach Queenstown, the adventure capital of New Zealand, with the Remarkables mountain range standing majestically in the backdrop.

## SUGGESTED ACTIVITY - TSS Earnslaw Cruise and Walter Peak Gourmet BBQ Dinner

Enjoy a quintessential Kiwi experience, a delicious gourmet BBQ buffet meal, and a farm demonstration in a stunning lakeside setting. Take in the stunning views of Lake Wakatipu and its surroundings as you cruise across the lake to the historic Walter Peak high country farm aboard the TSS Earnslaw Steamship. Enjoy the ambiance of the heart of the stately homestead while your Colonel's Homestead Restaurant chef prepares a gourmet BBQ dinner. Your seasonal menu includes an extensive selection of local New Zealand produce, including succulent meats and a selection of delicious vegetables and salads. Complete your meal with your choice of delicious desserts, or New Zealand cheeses. After dinner, watch the farm dogs in action with a sheep-herding demonstration and say hello to the other farm animals. Finally, cruise home under the southern stars and enjoy the fresh night air as the lights of Queenstown draw ever closer.

---

### Your accommodation: Millennium Hotel Queenstown

Right in the heart of the action, the Millennium Hotel is just minutes from Queenstown's central shopping and entertainment district. Outdoor activities such as bungy jumping, white water rafting and jet boating are just some of the easily accessible activities nearby in New Zealand's adventure capital.

Meals included:            Breakfast



---

## Day 16



### Return your vehicle to Queenstown Airport

Explore more of Queenstown before dropping your rental car at the airport depot and continuing your onward journey.

---

### Farewell from Aotearoa / New Zealand

Bid farewell to Aotearoa / New Zealand, taking with you unforgettable memories of its breathtaking landscapes and incredible adventures. In Māori, it is said mā te wā, which is not goodbye, it is see you soon!

---

## Tour details

Departures:	Daily
Tour type:	Nationwide Self Drive
Starts:	Auckland
Finishes:	Queenstown
Tour length:	16
Accommodation:	Hotel 4 star
Car/transport type:	

---

## Accommodation summary

Day 1	Sudima Auckland City
Day 2	Sudima Auckland City
Day 3	Sudima Lake Rotorua
Day 4	Sudima Lake Rotorua
Day 5	Naumi Hotel Wellington
Day 6	Naumi Hotel Wellington
Day 7	Carmore Chateau Marlborough
Day 8	Sudima Hotel Kaikōura
Day 9	Sudima Christchurch City
Day 10	Sudima Christchurch City
Day 11	Hermitage Hotel, Aoraki Wing Premium
Day 12	Distinction Te Anau Hotel & Villas
Day 13	Waitai Lodge Fiordland Escape
Day 14	Distinction Te Anau Hotel & Villas
Day 15	Millennium Hotel Queenstown