

Dunedin and Southern Lakes South Island Family Tour



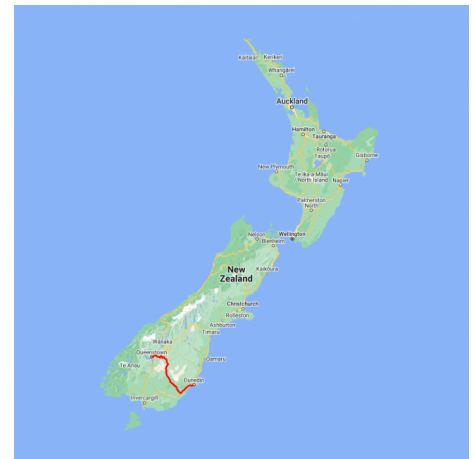
Experience the mountains and alpine lakes of the South Island on this family tour, based from the Adventure Capital of Queenstown. Highlights throughout include a close up encounter with the rare yellow eyed penguins in Dunedin. On reaching Queenstown you'll journey up the Skyline Gondola for a bird's eye view of the mountains and lake. The next day you'll cruise across Lake Wakatipu to Walter Peak High Country Station for a kiwi style BBQ lunch and farm tour.



Starts in: Queenstown
 Finishes in: Queenstown
 Length: 6days / 5nights
 Accommodation: Motels
 Can be customised: Yes



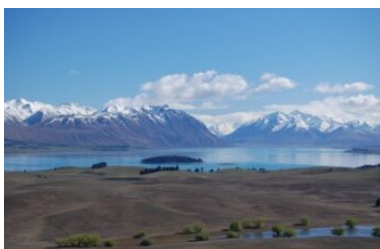
This itinerary can be customised to suit you perfectly. We can add more days, remove days, change accommodations, mix it up, add activities to suit your interests or simply design and create something from scratch. Call us today to get your custom New Zealand itinerary underway.



Inclusions:



- Includes: Late model rental cars
- Includes: Fully inclusive rental car insurance (excess may apply)
- Includes: Unlimited kms
- Includes: GPS navigation
- Includes: Airport & ferry terminal rental car fees
- Includes: Additional drivers
- Includes: Comprehensive tour pack (detailed itinerary, driving instructions, map/guidebooks, brochures)
- Includes: 24/7 support while touring New Zealand
- Included activity: Electronic Travel Guide and In-Country Support App
- Included activity: TSS Earnslaw Cruise and Walter Peak Gourmet BBQ Lunch
- Included activity: Gondola Ride with Skyline Queenstown
- Included activity: Penguin Tour with The Opera
- Meals included: 1 lunch



Day 1



Collect Rental Car

Choose a car to best suit your needs from our fantastic rental car range. From compact economy, hatchbacks to prestige SUVs.

Your accommodation: Scenic Suites Queenstown

Scenic Suites Queenstown offers guests exquisite style, comfort and spectacular views over Lake Wakatipu and the Southern Alps. The hotel prides itself on its 4-star hospitality that will make your stay in Queenstown even more memorable.



Day 2



TSS Earnslaw Cruise and Walter Peak Gourmet BBQ Lunch

Enjoy a quintessential Kiwi experience a delicious barbeque lunch and a farm tour in a stunning lakeside setting. First, take a scenic cruise from Queenstown to Walter Peak High Country Farm on board the vintage steamship TSS Earnslaw, one of the last remaining fully functional coal-fired passenger ships in the southern hemisphere.

Disembark and take in the picturesque shores of the Station. Relax on the lakeside terrace at the Colonel's Homestead Restaurant and savour the aromas of the best local produce being cooked on the grill. The seasonal menu has plenty to choose from salads, vegetables and succulent meat with plenty of delicious dietaries on offer as well. Finish your meal with a scrumptious dessert before joining an entertaining farm demonstration or exploring the beautiful lakeside gardens.

Queenstown Skyline Gondola Ride

Hop aboard the Skyline Gondola - the steepest cable car lift in the Southern Hemisphere! From which you can take in the awe-inspiring views of this spectacular landscape. Sit back and relax as you enjoy panoramic views of The Remarkables, Walter Peak, Cecil Peak, Coronet Peak and the magnificent Lake Wakatipu.

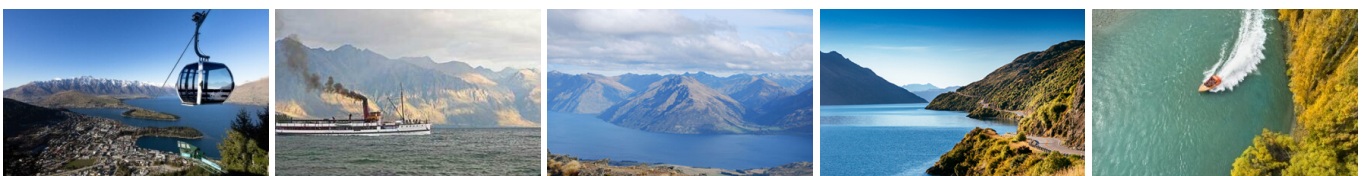
Your accommodation: Scenic Suites Queenstown

Scenic Suites Queenstown offers guests exquisite style, comfort and spectacular views over Lake Wakatipu and the Southern Alps. The hotel prides itself on its 4-star hospitality that will make your stay in Queenstown even more memorable.

Meals included: Lunch



Day 3



Explore Queenstown

Well-known as New Zealand's 'adventure capital', Queenstown is home to a range of adventures, from the world's first and most famous bungy jumps to jet boat thrills, white-water rafting, and skydiving. However, Queenstown offers far more than a fast-paced, action-packed holiday. Settled on the shores of beautiful Lake Wakatipu beneath a soaring panorama of the Remarkables Mountain Range, this alpine town is surrounded by many historic, gastronomic, and scenic wonders. Take a stroll through the beautiful lakefront parks and gardens, browse through market stalls on weekends, dine in wonderful al-fresco restaurants, or ride on the 100-year-old historic Steamship - TSS Earnslaw to Walter Peak Station. Take the Queenstown Gondola up to Bob's Peak and soak up the panoramic views of the magnificent lake and mountain ranges. And after all of that, if you do want the adrenaline rush, Queenstown is known for taking your pick from the Shotover Jet, Canyon Swing, Zipline, Luge, or Heli-hike.

SUGGESTED ACTIVITY - Shotover Jet Canyon Jet Boat Ride

Shotover Jet is the only company permitted to operate in the Shotover River Canyons. It's a thrilling ride! Skim past rocky outcrops at close range in your Shotover Jet 'Big Red', as you twist and turn through the narrow canyons at breathtaking speeds. And a major highlight - hold tight for the world-famous Shotover Jet full 360-degree spins!

SUGGESTED ACTIVITY - Adventure Quad Bike Tour

The Adventure Quad Bike Tour offers tailor made tours for families, beginner and experienced riders across 11,000 acres of New Zealand's best off-road terrain. The adventure tour is designed for those looking for excitement and a challenge. This tour gives you the most amount of ride time (1.5 hours) within the half day tour. You will begin your adventure at the gold workings on the Kawarau River and progresses up into the mountains. You will ride in small select groups according to ability, so whether you're a beginner or a professional you are guaranteed a challenging and exciting time.

SUGGESTED ACTIVITY - Dart River Safaris Funyaks

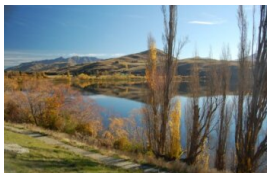
The best way to see, touch and feel the breathtaking Dart River valley. Jet boat for 1½ hours to the upper reaches of the Dart River, where visitors disembark and inflate their own canoe. After a full safety and paddling instruction, your Funyak journey begins. Paddle downstream on a glacier-fed river amidst rocky peaks and dense rainforests. Enjoy a sumptuous lunch and explore the Rock Burn Chasm and ancient beech forests. Paddle to Paradise then transfer to an awaiting back road coach for the return trip through Paradise. Funyaks is suitable for most ages with average fitness and no previous experience is required. It is important you read and understand the risks associated with this activity. For more information please see here.

Your accommodation: Scenic Suites Queenstown

Scenic Suites Queenstown offers guests exquisite style, comfort and spectacular views over Lake Wakatipu and the Southern Alps. The hotel prides itself on its 4-star hospitality that will make your stay in Queenstown even more memorable.



Day 4



Queenstown to Dunedin

Your route today is a historic one with many small towns along the way. Go through the Kawarau Gorge and stop at one of its renowned wineries. The gorge is also home to the world's first commercial bungy jumping operation and a viewing platform lets you watch others as you build the courage to try it yourself - or not! A little further you'll come to Cromwell, sitting beside the man-made Lake Dunstan - created when the valley was flooded in 1992 as part of the hydro electric scheme. As a result, much of the original town is now submerged, but several historic buildings were relocated to 'Old Cromwell Town'. Continue on through the Otago Goldfields. Pass the townships of Alexandra, Lawrence and Roxburgh - once with booming populations three times their current at the height of the 1800's gold-rush. Many of the old settlements remain and are worth a look if you can spare the time. Alexandra in more recent times has become the 'stone fruit capital' of New Zealand - named for its ideal fruit growing climate. As you drive further south the landscape changes to rolling hills and windswept farmland - melding fluidly with the rugged coast of Dunedin, your destination for the night.

Your accommodation: Motel on York

Motel on York is located in the heart of Dunedin city. The property offers superior accommodation only 300 metres away from cafes and restaurants.



Day 5



Explore Dunedin and the Otago Peninsula

Known as the Edinburgh of the South, Dunedin City has a heavy Scottish influence. Surrounded by rugged coastal plains and windswept beaches it's home to an eclectic mix of historical and modern architecture as well as industrial technology. Renowned for its Flemish Baroque-inspired 'gingerbread house', Railway Station, this university town is bustling with life. Head to the Saturday farmers market held in the aforementioned railway grounds for a taste of organic produce, handmade crepes and local honey. Explore the many cafes and wine bars in The Octagon, then continue on a self-guided walking tour of the internationally acclaimed Street Art dotted around the city. Drive to the coast and watch the freighters passing in the distance while you sunbathe, or hire a mountain bike and test your legs on one of the many trails available in the area. For a more immersive historical experience, follow the coast to New Zealand's only castle, Larnach Castle. On your way back be sure to head to the Otago Peninsula to see the largest mainland Albatross colony in the world.

Penguin Tour with The Opera

Learn about the endangered Yellow Eyed Penguin when you visit The Opera - Otago Peninsula Eco Restoration Alliance, a private conservation reserve dedicated to ensuring the survival of this unique species. The project is entirely funded by guided tours which allow the conservation team to engage in habitat restoration, predator control, a research program, and an on-site rehabilitation facility.

On your tour, you will learn about the issues the Yellow Eyed Penguin faces, their life cycle, and how the project is carried out. Your experience will begin in a theatre before moving to the rehabilitation center where penguins may be seen up close. You'll take a short bus trip over to the reserve and be led on foot approx 2km by your guide through a system of covered trenches to view hides that allow access to the living and breeding habitat of this very shy bird without disturbing them. There is also an opportunity to meet other animals that reside in the reserve including fur seals, sea lions, and several species of shore and land birds.

Your accommodation: Motel on York

Motel on York is located in the heart of Dunedin city. The property offers superior accommodation only 300 metres away from cafes and restaurants.



Day 6



Dunedin to Queenstown

This drive takes you through the heart of the historical Otago Goldfields. The townships of Lawrence, Roxburgh and Alexandra, once booming mining towns in the late 1800's gold rush now sleepy sun-traps bearing little resemblance to their bustling past. However, some buildings do remain as do the original shafts and workings. In more recent times Alexandra has become the 'stone fruit capital' of New Zealand, with the ideal climate for the trees. It is also a great place to buy some of the local produce. The road follows the South Island's longest river, the Clutha River, and at Clyde, you will see one of the largest hydro power stations harnessing its energy before passing through Gibbston to arrive at your destination today, Queenstown.

Return your vehicle to Queenstown Airport

Explore more of Queenstown before dropping your rental car at the airport depot and continuing your onward journey.

Tour details

Departures:	Daily
Tour type:	South Island Self Drive
Starts:	Queenstown
Finishes:	Queenstown
Tour length:	6
Accommodation:	Motels
Car/transport type:	

Included activities

Includes	Penguin Place
Includes	TSS Earnslaw cruise and BBQ lunch at Walter Peak high country farm, Queenstown
Includes	Queenstown Skyline Gondola

Accommodation summary

Day 1	Scenic Suites Queenstown
Day 2	Scenic Suites Queenstown
Day 3	Scenic Suites Queenstown
Day 4	Motel on York
Day 5	Motel on York