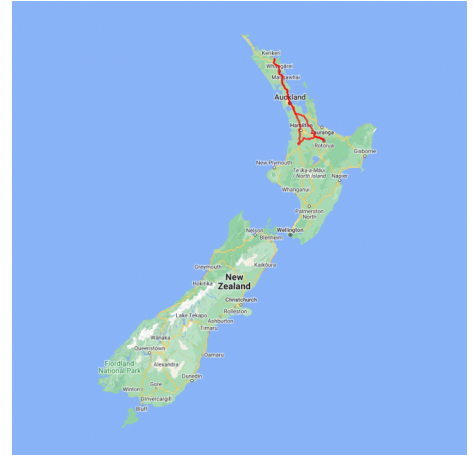


## Bay of Islands Rotorua and Waitomo Caves 5 Day Tour

This 5-day North Island tour highlights the iconic locations of Bay of Islands, Rotorua and the world famous Waitomo Caves.

Starts in: Auckland  
 Finishes in: Auckland  
 Length: 5days / 4nights  
 Accommodation: Hotel 3 star  
 Can be customised: Yes

This itinerary can be customised to suit you perfectly. We can add more days, remove days, change accommodations, mix it up, add activities to suit your interests or simply design and create something from scratch. Call us today to get your custom New Zealand itinerary underway.



### Inclusions:

Includes: All coach transport  
 Includes: Afterhours emergency support while touring  
 Included activity: Paihia Central/Coach Stop to Paihia Accommodation with Haruru Cabs  
 Included activity: The Visitor Promise - Cultural Learning Course  
 Included activity: Hole in the Rock Cruise with Fullers GreatSights  
 Included activity: Paihia Accommodation to Paihia central/coach stop with Haruru Cabs  
 Included activity: Hobbiton Day Tour from Rotorua with Gray Line / GreatSights - Lunch Included  
 Included activity: Rotorua to Auckland via Waitomo with FlexiTours

Includes: All pick ups/drop offs at destinations

Included activity: Auckland to Paihia, Bay of Islands by InterCity Coach

Included activity: Waitangi Treaty Grounds Guided Tour and Cultural Performance

Included activity: Paihia Accommodation to Paihia central/coach stop with Haruru Cabs

Included activity: Paihia Central/Coach Stop to Paihia Accommodation with Haruru Cabs

Included activity: Paihia, Bay of Islands to Rotorua by Intercity Coach

Included activity: Te Pā Tū Evening Māori Cultural Experience - Dinner Included

: 4 breakfasts, 1 lunch, 1 special dinner



## Day 1



### Auckland to Paihia, Bay of Islands by InterCity Coach

Leave Auckland and head North to the Bay of Islands. Taking you along the coast road past the seaside villages of Orewa and Waiwera. Then it's on to the township of Puhoi, New Zealand's only Bohemian settlement, then Warkworth and the harbourside city of Whangarei and the unique township of Kawakawa. Arriving into the subtropical Bay of Islands you are greeted with bush-clad hillsides dropping to golden sand beaches. Paihia is the main centre of the bay and has a great beachside atmosphere.

---

### Paihia Central/Coach Stop to Paihia Accommodation with Haruru Cabs

On arrival to Paihia, you will be transferred from Paihia Central to your accommodation.&nbsp;

---

### Waitangi Treaty Grounds Guided Tour and Cultural Performance

Waitangi is one of New Zealand's most historic sites where the Treaty of Waitangi was signed in 1840 between the Māori and the British Government. This two day pass allows you access to the Treaty of Waitangi Grounds and includes admission to the Te Kōngahu Museum and Te Rau Aroha Museum and a Maori Cultural performance. During your guided tour, learn about the history of the treaty and discover the stories and events that shaped New Zealand. The cultural performance inside the carved meeting house includes waiata (singing), poi and the haka - a war dance Aotearoa-New Zealand is well known for.

---

### Your accommodation: Copthorne Hotel and Resort Bay of Islands

Copthorne Hotel & Resort Bay of Islands is located within the Waitangi Treaty grounds, surrounded by native bush and the beautiful Bay of Islands Harbour.



---

## Day 2



### Paihia Accommodation to Paihia central/coach stop with Haruru Cabs

You will be transferred from your accommodation to Paihia Central.&nbsp;

---

### SUGGESTED ACTIVITY - Cape Reinga & Ninety Mile Beach Full Day Tour with Fullers Bay of Islands - Lunch Included

Journey to the very tip of the North Island and uncover a region of rich Māori tradition along the way on an unforgettable full-day tour. Travel along the sand-swept shore of Ninety Mile Beach in our purpose-built coach and experience sandboarding (weather permitting). In Māori tradition, Cape Reinga or Te Rerenga Wairua is the place where spirits depart on their long journey back to the homeland. Stand at the northernmost point of New Zealand and drink in the panoramic views. As you stand beneath the iconic lighthouse, and watch the Tasman Sea and the mighty Pacific Ocean collide far below, you'll feel the power of this special place. Throughout the day your local driver guide will provide an entertaining and thought-provoking insight into the culture, history and natural wonders of the Far North.&nbsp;

---

### Hole in the Rock Cruise with Fullers GreatSights

Board your cruise and take in the stunning views as you glide out through the islands and along the Rakaumangamanga Peninsula to Cape Brett, where a historic lighthouse keeps watch over and Piercy Island/Motukōkako, or as it is popularly known as the Hole in the Rock. According to Māori legend, local warriors used to paddle through the Hole in the Rock in their canoes before departing for battle. Drops of water from the cave roof above were a good omen. If conditions permit, your skipper will expertly guide the ship through the narrow space. Keep an eye out for common and bottlenose dolphins, whales, and other marine life during your cruise, and have your camera ready as you get up close to the action. Stop off at Otehei Bay on Urupukapuka Island where you have time to relax, take a walk, have a swim, or enjoy a bite to eat and drink from the on-site fully licensed café. The purpose-built catamaran is licensed by DOC (the Department of Conservation) for dolphin viewing and the crew has years of experience locating dolphins in these waters.&nbsp;



## Paihia Central/Coach Stop to Paihia Accommodation with Haruru Cabs

On arrival to Paihia, you will be transferred from Paihia Central to your accommodation.&nbsp;

---

### Your accommodation: Copthorne Hotel and Resort Bay of Islands

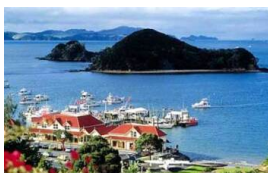
Copthorne Hotel & Resort Bay of Islands is located within the Waitangi Treaty grounds, surrounded by native bush and the beautiful Bay of Islands Harbour.

Meals included:            Breakfast



---

## Day 3



### Paihia Accommodation to Paihia central/coach stop with Haruru Cabs

You will be transferred from your accommodation to Paihia Central.&nbsp;

---

### Paihia, Bay of Islands to Rotorua by Intercity Coach

Your journey will take you past scenic native forests and sub-tropical bush, before crossing the Auckland Harbour Bridge to arrive into the spectacular city scene of Auckland. Continue south into the rich farmland of the Waikato and onto the cultural heart of the North Island and Rotorua City.

---

### SUGGESTED ACTIVITY - Redwoods Nightlights + Glowworms General Admission

Redwoods Nightlights is one of New Zealand's top design-led tourism experiences, featuring 30 exquisite lanterns designed by world-renowned designer and sustainability champion David Trubridge. Floating between 9 and 20 metres above the forest floor, this core eco-tourism walk is 700 metres long, spans across 28 suspension bridges and 27 platforms, and takes about 40 minutes to complete. Then descend into a 70-metre eco-cave to witness the magic of over 5,000 native glowworms illuminating rock formations and a reflective water feature. The combined experience offers a total immersion into the forest's nocturnal beauty, both high in the canopy and deep within the earth.

---

### Your accommodation: Millennium Hotel Rotorua

Millennium Hotel is Rotorua's largest 4-star deluxe hotel. Perfectly situated in the heart of the city overlooking Lake Rotorua. Five levels of accommodation offer guests a wide variety of scenic views.

Meals included:            Breakfast



---

## Day 4



### Hobbiton Day Tour from Rotorua with Gray Line / GreatSights - Lunch Included

Take a journey from Rotorua to the famous Hobbiton Movie Set, located inside a picturesque 1,250-acre sheep and beef farm near Matamata. Here, take a guided tour of the village of Hobbiton, which was carefully created in amazing detail as a film location for the Lord of the Rings and Hobbit movie trilogies. During your guided tour of this amazing location, you'll see sights like Hobbit holes, the Mill and the Green Dragon Inn, and learn how farmland was transformed into a living, breathing piece of Middle-earth. After exploring Hobbiton, enjoy a tasty lunch in the Party Marquee and then return to Rotorua.

---

## Te Pā Tū Evening Māori Cultural Experience - Dinner Included

New Zealand's Most Awarded Cultural Attraction, presenting Te Pā Tū. Feast on song, drama, tradition, and divine seasonal kai (cuisine) within the forest Pā (village) blanketed by towering Tawa trees, blazing bonfires, and a forest-formed amphitheatre. Te Pā Tū shares Māori history, traditions, and cultural aspirations across 4-hours of celebration and feasting. These events change with each season of the Maramataka, the Māori lunar calendar.

---

### Your accommodation: Millennium Hotel Rotorua

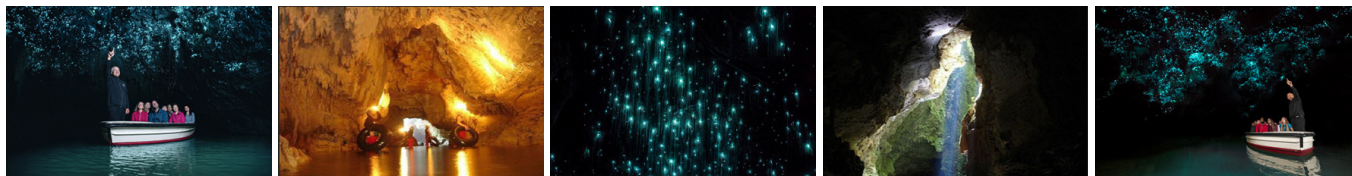
Millennium Hotel is Rotorua's largest 4-star deluxe hotel. Perfectly situated in the heart of the city overlooking Lake Rotorua. Five levels of accommodation offer guests a wide variety of scenic views.

Meals included: Breakfast, Lunch, Speciality Dinner



---

## Day 5



### Rotorua to Auckland via Waitomo with FlexiTours

Journey from Rotorua to Auckland, passing through New Zealand's iconic farmland and Waikato Dairy country in a comfortable and spacious mini-coach. Enjoy Waitomo Caves, one of the country's best natural attractions where you will take a boat ride through the darkness to see a spectacular glow worm grotto. Admire thousands of magical glow worms light up the caves, a sight which has been enjoyed for over 130 years.

---

## Tour details

Departures:	Daily
Tour type:	Independant Bus & Coach
Starts:	Auckland
Finishes:	Auckland
Tour length:	5
Accommodation:	Hotel 3 star
Car/transport type:	

---

## Accommodation summary

Day 1	Copthorne Hotel and Resort Bay of Islands
Day 2	Copthorne Hotel and Resort Bay of Islands
Day 3	Millennium Hotel Rotorua
Day 4	Millennium Hotel Rotorua