



Middle Earth Discovered

A tour that takes you to the very best Lord of the Rings locations that New Zealand has to offer. We will even show you Hobbiton, and the Weta Workshop where many of the films creations were made. Embark on a journey of Middle Earth in the north island before flying quickly down to Queenstown to see some of the dramatic mountain backdrops that you'll see in the movies.

Starts in: Auckland
Finishes in: Christchurch
Length: 8days / 7nights
Accommodation: Hotel 3 star
Can be customised: Yes

This itinerary can be customised to suit you perfectly. We can add more days, remove days, change accommodations, mix it up, add activities to suit your interests or simply design and create something from scratch. Call us today to get your custom New Zealand itinerary underway.



Inclusions:

Includes: All coach transport

Includes: Afterhours emergency support while touring

Included activity: The Visitor Promise - Cultural Learning Course

Included activity: Te Pā Tū Evening Māori Cultural Experience - Dinner Included

Included activity: Rotorua to Wellington by InterCity Coach

Included activity: Lord Of The Rings Full Day Private Tour with Capital Personalised Tours - Lunch Included

Included activity: Air New Zealand flight Wellington to Queenstown

Included activity: Milford Sound Cruise and Coach Tour from Queenstown with RealNZ - Lunch Included

Included activity: Queenstown to Christchurch via Mt Cook & Lake Tekapo with Cheeky Kiwi

Includes: All pick ups/drop offs at destinations

Included activity: Auckland to Rotorua Small Group Tour via Hobbiton with Bush and Beach

Included activity: Original Ziplining Experience with Rotorua Canopy Tours

Included activity: Private Transfer Rotorua Accommodation to Rotorua Intercity Depot with Xquizit

Included activity: Private Transfer from Wellington Train/Bus Station to Accommodation with In Style Executive

Included activity: Private Transfer Wellington Hotel to Airport with In Style Executive

Included activity: Private Transfer Queenstown Domestic Airport to Accommodation (LSQ)

Included activity: Lord of the Rings Queenstown Tour with Nomad Safaris

: 7 breakfasts, 1 special dinner

Day 1



Auckland to Rotorua Small Group Tour via Hobbiton with Bush and Beach

Departing from Auckland, this is a wonderful way to get to Rotorua and include a magical journey through Middle-Earth to the Hobbiton Movie Set from "The Lord of the Rings" and "The Hobbit" films. Travel south from Auckland over the Bombay Hills to the rich farmland of the Waikato region. Journey through the heritage town of Cambridge where tree-lined streets add to the English-style atmosphere. On arrival at Shire's Rest, you embark on your Hobbiton movie set tour where you will see 44 Hobbit holes, the Mill and double arch bridge, the party tree and visit the Green Dragon Inn. At this stunning location, you can take a photo at the door of Bilbo's house in Bag End, looking out over the whole of Hobbiton to the hills in the distance. At the end of your Hobbiton movie set tour, you will travel onwards to Rotorua.

Your accommodation: Sudima Lake Rotorua

Sudima Hotel Lake Rotorua boasts a location that is second-to-none, right on the shores of beautiful Lake Rotorua. Adjacent to the world-famous Polynesian Spa complex and just a short stroll to all the attractions in Rotorua.



Day 2



Original Ziplining Experience with Rotorua Canopy Tours

Embark on a three-hour adventure through the native New Zealand forest. Journey through the beautiful forest canopy via an incredible network of trails, tree platforms, Ziplines and swing bridges. See breathtaking views of the woodland valleys and hills as you fly through tight openings in the trees. In between the thrill of the ziplines and suspended tree bridges, your guides will share their passion and knowledge for the forest and the conservation challenges to preserve it. It is important you read and understand the risks associated with this activity. For more information see [here](#).

Te Pā Tū Evening Māori Cultural Experience - Dinner Included

New Zealand's Most Awarded Cultural Attraction, presenting Te Pā Tū. Feast on song, drama, tradition, and divine seasonal kai (cuisine) within the forest Pā (village) blanketed by towering Tawa trees, blazing bonfires, and a forest-formed amphitheatre. Te Pā Tū shares Māori history, traditions, and cultural aspirations across 4-hours of celebration and feasting. These events change with each season of the Maramataka, the Māori lunar calendar.

Your accommodation: Sudima Lake Rotorua

Sudima Hotel Lake Rotorua boasts a location that is second-to-none, right on the shores of beautiful Lake Rotorua. Adjacent to the world-famous Polynesian Spa complex and just a short stroll to all the attractions in Rotorua.

Meals included: Breakfast, Speciality Dinner



Day 3



Private Transfer Rotorua Accommodation to Rotorua Intercity Depot with Xquizit

You will be collected from your accommodation and transferred to Rotorua Intercity Coach Depot.

Rotorua to Wellington by InterCity Coach

Your coach journey from Rotorua to Wellington takes you via the township of Taupō and New Zealand's largest lake. The lake is a gigantic volcanic caldera formed during one of the world's largest-ever eruptions. Skirting Tongariro National Park, one of New Zealand's three world heritage sites and clouds permitting you can see the 2,500-metre peak of the still volcanically active Mt. Ruapehu. You might recognize the symmetrical shape of Mt. Ngauruhoe as this was used as the scenery of Mt. Doom in the Lord of the Rings Trilogy. Heading south you pass through the rural towns of Taihape, Mangaweka and Bulls before arriving on the Kapiti Coast, with its coastal seaside towns of Paraparaumu, Paekakariki and Plimmerton. The Kapiti Coast leads into Wellington, New Zealand's capital. Wellington sits on a wonderful deep natural harbour, surrounded by bush-clad hills. The city centre is compact (only around 1 square kilometre), so exploring on foot is relatively easy. From your city centre accommodation, you can easily stroll to the cafes and restaurants around Courtenay Place and explore New Zealand's national museum, Te Papa.

Private Transfer from Wellington Train/Bus Station to Accommodation with In Style Executive

You will be met on arrival into Wellington train station and transferred to your hotel.

Your accommodation: Hotel Ibis Wellington

Hotel Ibis Wellington is ideally located in Featherston Street in the heart of Wellington City and easy walking distance to Wellington's famous cafe lifestyle.

Meals included: Breakfast



Day 4



Lord Of The Rings Full Day Private Tour with Capital Personalised Tours - Lunch Included

Journey on an unforgettable LOTR adventure. Leaving Wellington, you will first head for the hills, admiring views from Mt Victoria before visiting Hobbit's Hideaway in the 'Outer Shire'. Next, immerse yourself at the Weta Cave in Miramar. Tour the museum, shop, and capture photos with iconic movie props. Experience the fascinating 'Weta Workshop Experience', going behind-the-scenes to see props and weaponry, with artists describing their creations. After a magical cinematic journey, you enjoy a delicious local lunch, and then venture north into the Hutt Valley, following the path of the 'River Anduin' to discover the sights of 'Helms Deep' and the 'Gardens of Isengard.' Conclude your adventure at 'Rivendell and the Legolas tree' before returning to Wellywood, enriched by the magic of Middle-earth.

Your accommodation: Hotel Ibis Wellington

Hotel Ibis Wellington is ideally located in Featherston Street in the heart of Wellington City and easy walking distance to Wellington's famous cafe lifestyle.

Meals included: Breakfast



Day 5



Private Transfer Wellington Hotel to Airport with In Style Executive

You will be collected from your Wellington hotel and transferred to the airport.

Private Transfer Queenstown Domestic Airport to Your Accommodation

On arrival you will be met by a private driver and delivered to your Queenstown accommodation.

Explore Queenstown

Well-known as New Zealand's 'adventure capital', Queenstown is home to a range of adventures, from the world's first and most famous bungy jumps to jet boat thrills, white-water rafting, and skydiving. However, Queenstown offers far more than a fast-paced, action-packed holiday. Settled on the shores of beautiful Lake Wakatipu beneath a soaring panorama of the Remarkables Mountain Range, this alpine town is surrounded by many historic, gastronomic, and scenic wonders. Take a stroll through the beautiful lakefront parks and gardens, browse through market stalls on weekends, dine in wonderful al-fresco restaurants, or ride on the 100-year-old historic Steamship - TSS Earnslaw to Walter Peak Station. Take the Queenstown Gondola up to Bob's Peak and soak up the panoramic views of the magnificent lake and mountain ranges. And after all of that, if you do want the adrenaline rush, Queenstown is known for taking your pick from the Shotover Jet, Canyon Swing, Zipline, Luge, or Heli-hike.

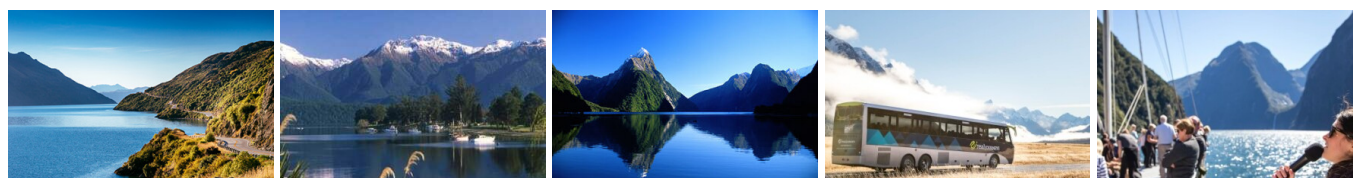
Your accommodation: Copthorne Hotel and Resort Queenstown Lakefront

The Copthorne Hotel and Resort, Queenstown Lakefront is conveniently located within walking distance to the centre of Queenstown and just a few minutes stroll from the picturesque Lake Wakatipu.

Meals included: Breakfast



Day 6



Milford Sound Cruise and Coach Tour from Queenstown with RealNZ - Lunch Included

Departing from Queenstown sit back and relax aboard a luxury glass-roofed coach to enjoy a relaxing trip along the shores of Lake Wakatipu and through the rolling countryside to Te Anau. The coach driver provides an informative commentary and plenty of photo opportunities. After a morning tea break in Te Anau, the coach continues along the spectacular Milford Road. On reaching Piopiotahi-Milford Sound, board your vessel for a leisurely cruise in the fiord. The cruise provides excellent viewing opportunities and plenty of time is available to enjoy waterfalls, rainforests, mountains and wildlife. Rain or shine, every day in Piopiotahi-Milford Sound will leave you in awe. It is important you read and understand the risks associated with this activity. For more information, see [here](#).

Your accommodation: Copthorne Hotel and Resort Queenstown Lakefront

The Copthorne Hotel and Resort, Queenstown Lakefront is conveniently located within walking distance to the centre of Queenstown and just a few minutes stroll from the picturesque Lake Wakatipu.

Meals included: Breakfast



Day 7



Lord of the Rings Queenstown Tour with Nomad Safaris

A thrilling Lord of the Rings Queenstown Safari, combining breathtaking filming locations with exhilarating 4WD action. Discover the magic of Middle-earth as expert guides bring Tolkien's world to life with fascinating facts and tales. Visit iconic sites like the Misty Mountains, the Pillars of the Kings (Argonath), and more. Travel along a historic gold mining road, try your hand at gold panning, and soak in spectacular panoramic views of Queenstown's stunning landscapes. A must for any Lord of the Rings fan and adventure seeker!

Queenstown Gardens

The Queenstown Gardens are just a few minutes walk from central Queenstown and offer a beautiful and tranquil setting away from the hustle and bustle. The landscaped gardens include plenty of places to sit down and admire the beauty of the gardens. Pristine lawns, a large water feature, a wide variety of trees and plants, a rose garden and a couple of significant memorials all combine to provide that perfect escape from downtown Queenstown. The gardens are a popular place to bring a picnic, relax with friends and family and enjoy the views of Lake Wakatipu. The most visible tree is the Douglas Fir which provides a protective cover around the gardens and seclusion from the lively downtown area of Queenstown. For a bit of fun, the gardens feature an 18-hole disc golf course, inviting you to complete a round using your disc. Metal baskets serve as the holes, with designated pars and tees adding to the challenge. Frisbees are readily available for purchase at most outdoor shops in the town center.

Walking tracks in and around Queenstown

Queenstown is well known for its adventure sports and activities but it also a great network of walking tracks and trails to suit all abilities and time frames. The department of conservation office located on Shotover Street can offer local advice on the conditions of walking tracks. Some of the more popular walks are listed below.

Queenstown Hill - around 3 hours return (4 kilometres). Gravel path and then trail. A 500 metre climb through pine forest to the summit of Te Tapu-nui (mountain of intense sacredness). The climb is well rewarded with 360 degree views of Remarkables Mountain Range, the Kawarau River, Cecil Peak, and of course Lake Wakatipu. The track starts on Belfast Terrace which is just 1 km from the city centre.

Ben Lomond - around 2 hours (4 1/2 kms return). Take the Skyline Gondola ride to the terminal and the track is signposted from here. This is quite a steep climb and not recommended for children. Also take note of weather forecasts as the summit sits at 1748 metres. The effort is rewarded with spectacular views and on clear days you can see Mt Earnslaw and Mt Aspiring.

Bobs Cove - 20 minutes of easy lakeshore walks. Bobs Cove is 14 kilometres from Queenstown along the Glenorchy Road. Take the drive along the road and Bobs Cove is signposted.

Your accommodation: Copthorne Hotel and Resort Queenstown Lakefront

The Copthorne Hotel and Resort, Queenstown Lakefront is conveniently located within walking distance to the centre of Queenstown and just a few minutes stroll from the picturesque Lake Wakatipu.

Meals included: Breakfast



Day 8



Queenstown to Christchurch via Mt Cook & Lake Tekapo with Cheeky Kiwi

This small group, fully-guided day trip combines all of the key highlights in the area with magnificent views of the famous Lake Tekapo, Aoraki/Mount Cook National Park and Tasman Glacier. The ultimate way to get from Queenstown to Christchurch. Led by famously passionate tour guides, notorious for bringing your journey to life by sharing their stories and rich background knowledge, in modern, comfortable minibuses packed with extras ensuring your comfort and safety.

Tour details

Departures:	Daily
Tour type:	Independant Bus & Coach
Starts:	Auckland
Finishes:	Christchurch
Tour length:	8
Accommodation:	Hotel 3 star
Car/transport type:	

Accommodation summary

Day 1	Sudima Lake Rotorua
Day 2	Sudima Lake Rotorua
Day 3	Hotel Ibis Wellington
Day 4	Hotel Ibis Wellington
Day 5	Copthorne Hotel and Resort Queenstown Lakefront
Day 6	Copthorne Hotel and Resort Queenstown Lakefront
Day 7	Copthorne Hotel and Resort Queenstown Lakefront