

Glaciers, Mountains & Lakes Package

Traverse the island by rail onboard the TranzAlpine, then explore Glacier Country in the West Coast. Experience a bucket list heli hike adventure on Fox Glacier before saying farewell and heading into Central Otago. In this incredible tour, take the Skyline to view Queenstown from above, explore Queenstown with a guide, drive the scenic road to Milford Sound and continue the adventure into the East Coast.

Starts in: Christchurch
Finishes in: Christchurch
Length: 7days / 6nights
Accommodation: Hotel 3 star
Can be customised: Yes

This itinerary can be customised to suit you perfectly. We can add more days, remove days, change accommodations, mix it up, add activities to suit your interests or simply design and create something from scratch. Call us today to get your custom New Zealand itinerary underway.



Inclusions:

Includes: All coach transport
Includes: Afterhours emergency support while touring
Included activity: Māwhera Pounamu Pathway Immersive Experience
Included activity: The Visitor Promise - Cultural Learning Course
Included activity: Fox Glacier to Queenstown with Glacier Shuttles
Included activity: Best of Queenstown Scenic Tour with Altitude Tours
Included activity: Te Anau to Dunedin with Iconic
Included activity: Dunedin to Christchurch by InterCity Coach

Includes: All pick ups/drop offs at destinations
Included activity: TranzAlpine Scenic Train: Christchurch to Greymouth
Included activity: Greymouth to Fox Glacier with Glacier Shuttles
Included activity: Flying Fox Glacier Helihiike with Fox Glacier Guiding
Included activity: Gondola Ride with Skyline Queenstown
Included activity: Milford Sound Coach, Cruise, Coach Small Group Tour with Altitude Tours - Including Lunch
Included activity: Dunedin Accommodation to Coach Stop Transfer with Iconic
: 1 lunch

Day 1



TranzAlpine Scenic Train: Christchurch to Greymouth

The early morning departure is rewarded with incredible scenery today onboard the TranzAlpine Scenic Train. Considered one of the world's great train journeys, it travels between the East Coast, Christchurch and the West Coast, Greymouth. From your carriage, you'll see the fields of the Canterbury Plains and farmland, followed by the spectacular gorges and river valleys of the Waimakariri River. The train then climbs into the Southern Alps passing through small settlements and Arthur's Pass National Park before descending through the lush beech rain forest to the West Coast town of Greymouth, a great base for visits to Punakaiki and the West Coast glaciers.

Māwhera Pounamu Pathway Immersive Experience

Māwhera Pā is the first location along the Pounamu Pathway touring route to open. This self-guided experience is a historical and creative exploration of the Poutini Ngāi Tahu and the Māwhera Pā settlement people, retold by their ancestors. The exhibition will lead you through six different narratives, each tale including a large-scale masterpiece, artistically crafted by Weta Workshop to cultivate an immersive journey of visuals and sound.

Greymouth to Fox Glacier with Glacier Shuttles

You will be met at the Greymouth Train Station by a representative from Glacier Shuttles and driven to your accommodation in Fox Glacier.

Your accommodation: Heartland Hotel Glacier Country

Heartland Hotel Glacier Country is located right in the centre of Fox Glacier township, putting you in easy reach of the unique experiences available within Westland National Park.



Day 2



Fox Glacier

The mighty Fox Glacier is the largest and longest of the stunning West Coast glaciers. Remarkably, it ends in a temperate rainforest just 250 metres above sea level, only twelve kilometres from the sea. The valley at the glacier's head boasts more peaks than any other in New Zealand. Like all glaciers, the Fox Glacier advances and retreats, with its latest surge evident in the bulging lower ice fall. Alpine Guides offers access to the lower part of the glacier via a hidden track that winds through regenerating native forest, providing stunning views of the glacier's upper reaches. Fox Glacier Township, often described as the more "laid-back" of the twin Glacier Country townships, is celebrated for its relaxed atmosphere, excellent cafés, and a variety of accommodation options. The township also enjoys breathtaking views of New Zealand's tallest peaks, Mount Cook and Mount Tasman. For an unforgettable experience, take a helicopter ride to admire the glacier from above or opt for a heli hike to get up close to its icy formations. Nearby, Lake Matheson, renowned for its mirror-like reflections, is just a five-minute drive west of Fox Township. A short 25-minute drive further west takes you to historic Gillespie's Beach, famous for its crashing surf and views of distant snow-capped mountains.

Flying Fox Glacier Helihiike with Fox Glacier Guiding

The Fly-In, Fly-Out Helihiike offers an unforgettable blend of adventure and breathtaking scenery, combining thrilling helicopter flights with a guided walk on the Fox Glacier. Flying in grants access to a remote part of the glacier, where powerful ice forces create stunning caves and arches. After an exhilarating flight over the lower and upper icefalls and Victoria Falls, you'll land in a pristine area of the glacier. Equipped with crampons, follow your guide to explore ever-changing ice formations and caves, capturing incredible photos along the way. It is important you read and understand the risks associated with this activity. For more information please see [here](#).

Your accommodation: Heartland Hotel Glacier Country

Heartland Hotel Glacier Country is located right in the centre of Fox Glacier township, putting you in easy reach of the unique experiences available within Westland National Park.



Day 3



Fox Glacier to Queenstown with Glacier Shuttles

Set off from the small village of Fox Glacier and travel through the remote and unspoiled scenery of the West Coast. Take the scenic Haast Pass through the Southern Alps, the southernmost pass between the East and West coasts of the South Island. See the clear and pristine waters of Lake Hawea as you travel east, passing Lake Hawea and Lake Wanaka as you continue through to New Zealand's 'Adventure Capital', Queenstown.

Queenstown Skyline Gondola Ride

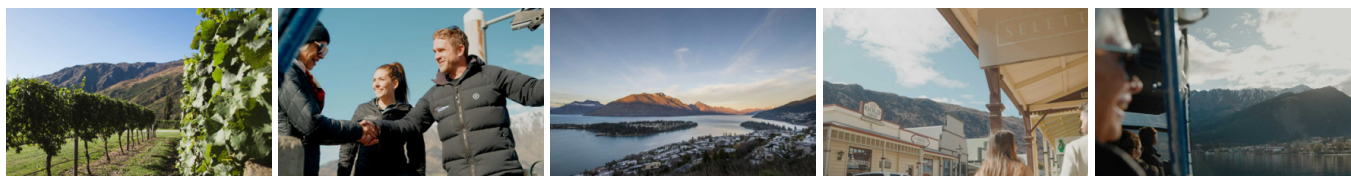
Hop aboard the Skyline Gondola - the steepest cable car lift in the Southern Hemisphere! From which you can take in the awe-inspiring views of this spectacular landscape. Sit back and relax as you enjoy panoramic views of The Remarkables, Walter Peak, Cecil Peak, Coronet Peak and the magnificent Lake Wakatipu.

Your accommodation: Copthorne Hotel and Resort Queenstown Lakefront

The Copthorne Hotel and Resort, Queenstown Lakefront is conveniently located within walking distance to the centre of Queenstown and just a few minutes stroll from the picturesque Lake Wakatipu.



Day 4



Best of Queenstown Scenic Tour with Altitude Tours

Experience Queenstown's Ultimate Day Tour, from central Queenstown. Your adventure begins with a journey in a premium vehicle with complimentary Wi-Fi, leading you to an observation point for stunning panoramic views. Next, visit the charming township of Arrowtown, with a stop at the Shotover River for photos, and enjoy time to explore, grab a coffee, or try gold panning. Continue to Gibbston, home to the world's first commercial bungee jump and famous for its Middle-earth magic and world-class wines. Enjoy wine tasting (non-alcoholic substitutes available) and a shared cheeseboard at a local winery with breathtaking views. Conclude your tour with a picturesque 30-minute scenic boat cruise on Lake Wakatipu, ending at the wharf in the heart of Queenstown.

SUGGESTED ACTIVITY - TSS Earnslaw Cruise and Walter Peak Gourmet BBQ Dinner

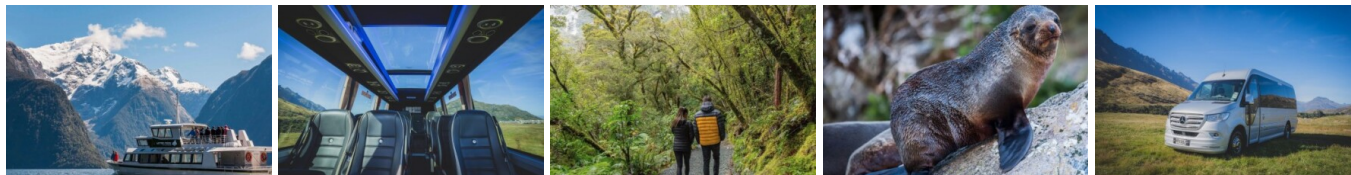
Enjoy a quintessential Kiwi experience, a delicious gourmet BBQ buffet meal, and a farm demonstration in a stunning lakeside setting. Take in the stunning views of Lake Wakatipu and its surroundings as you cruise across the lake to the historic Walter Peak high country farm aboard the TSS Earnslaw Steamship. Enjoy the ambiance of the heart of the stately homestead while your Colonel's Homestead Restaurant chef prepares a gourmet BBQ dinner. Your seasonal menu includes an extensive selection of local New Zealand produce, including succulent meats and a selection of delicious vegetables and salads. Complete your meal with your choice of delicious desserts, or New Zealand cheeses. After dinner, watch the farm dogs in action with a sheep-herding demonstration and say hello to the other farm animals. Finally, cruise home under the southern stars and enjoy the fresh night air as the lights of Queenstown draw ever closer.

Your accommodation: Copthorne Hotel and Resort Queenstown Lakefront

The Copthorne Hotel and Resort, Queenstown Lakefront is conveniently located within walking distance to the centre of Queenstown and just a few minutes stroll from the picturesque Lake Wakatipu.



Day 5



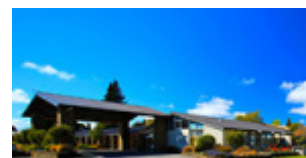
Milford Sound Coach, Cruise, Coach Small Group Tour with Altitude Tours - Including Lunch

This small group Milford Sound day tours allow you to escape the crowds and offers a truly unique tour showcasing this spectacular and world famous region. Experience a stunning two hour small boat nature cruise on the fiord – see waterfalls, fur seals and occasionally dolphins. Enjoy a delicious picnic lunch, as well as enjoying lots of fun and informative commentary from the local guide, and plenty of off the beaten track visits away from the crowds.

Your accommodation: Distinction Te Anau Hotel & Villas

The Te Anau Hotel and Villas offers a range of accommodation from hotel rooms and suites to villas. Ideally located on the lake front this hotel is just a few minutes stroll from the shops, cafes and many activities Te Anau has to offer.

Meals included: Lunch



Day 6



Te Anau to Dunedin with Iconic

Journey away from Fiordland today and toward the rolling hills of the east coast, passing through lush Southland farmland and back into the Otago region.

Your accommodation: Kingsgate Hotel Dunedin

Located right in the heart of the city, Kingsgate Hotel Dunedin has the CBD right at its doorstep. The Otago Museum is just a stroll away, while the beach is a mere 10-minute drive. This hotel boasts sunny north-facing guest rooms, brimming with amenities. All rooms feature balconies, an excellent vantage point to view the city.



Day 7



Dunedin Accommodation to Coach Stop Transfer with Iconic

You will be collected from your accommodation and transferred to the coach stop in time for your departure.

Dunedin to Christchurch by InterCity Coach

The drive follows the Otago Coastline as you head north from Dunedin. Pass through the unique town of Oamaru, famous for its buildings constructed with the unique locally quarried white stone. The port town of Timaru is next and then the vast Canterbury Plains. Crossing New Zealand's longest bridge at Rakaia you can view some great examples of the South Island's famous braided rivers.

Tour details

Departures:	Daily
Tour type:	Independant Bus & Coach
Starts:	Christchurch
Finishes:	Christchurch
Tour length:	7
Accommodation:	Hotel 3 star
Car/transport type:	

Accommodation summary

Day 1	Heartland Hotel Glacier Country
Day 2	Heartland Hotel Glacier Country
Day 3	Copthorne Hotel and Resort Queenstown Lakefront
Day 4	Copthorne Hotel and Resort Queenstown Lakefront
Day 5	Distinction Te Anau Hotel & Villas
Day 6	Kingsgate Hotel Dunedin